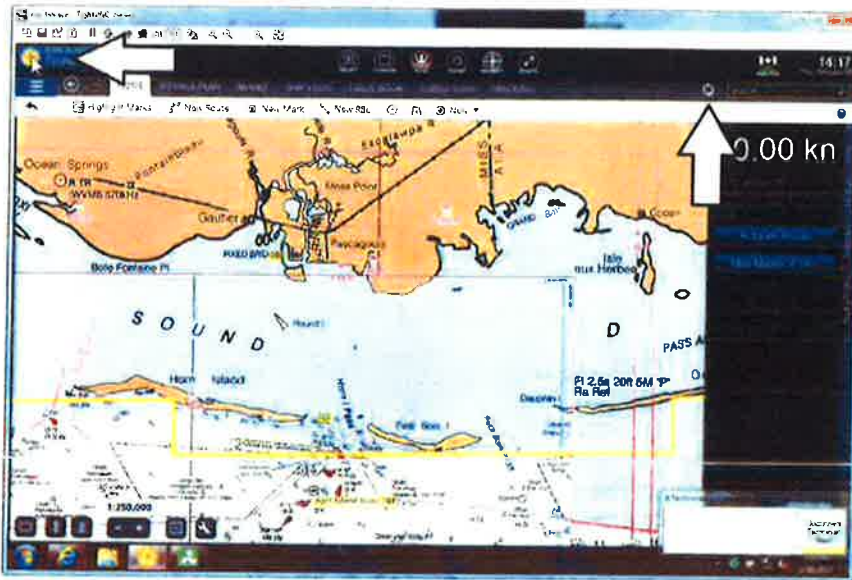


## Updating Rose Point ECS 2011

If Rose Point is not already open please open it now.

With Rose Point open, left click on the compass rose in the upper left corner.

A menu should drop down with "HOME" "VOYAGE PLAN" "MARKS" etc. To the right hand side you should see two arrows in a circle. Left click on the two circles.



This will open the Synchronizing popup.

The charts will begin to update. Depending on your internet connection these updates might take awhile. When they are done both the "Charts and Chart Overlays" as well as "Ship's Log" should say "Up to date."

